

annual report  
division of continuing education

# REPORT

DCE 2007/2008

Kansas State University





**k-state** division of continuing education

welcome

## **The Kansas State University Division of Continuing Education (DCE) is a service organization to the University**

We work with university units to provide support services to extend K-State's teaching and research to people in Kansas, the United States, and the world through online credit and non-credit learning opportunities.

**Distance education courses & degrees**

**Certificate programs**

**Conferences and non-credit programs**

K-State, through the Division of Continuing Education, provides place-bound students access to the university through distance learning and provides working professionals with the opportunity to enhance their skills, gain updated information in their fields, and stay ahead of the curve in their careers.

K-State is a nationally known provider of distance education, and during the 2007-2008 academic year, the Division continued to provide leadership with continuing growth in this area of 14.42%. During this academic year, K-State faculty, a distance student, and various credit and noncredit programs were recognized by national continuing education organizations as being one of the best in the Great Plains region and in the nation.

This annual report summarizes the highlights from 2007-2008 for a variety of learning opportunities coor-

inated by the Division, including distance education degrees, 2 + 2 partnerships with community colleges, conferences and noncredit activities, Intersession, and Evening College. The report includes statistics of each college's efforts through the Division and a feature story of a distance student from each college.

The Division of Continuing Education is proud of the partnerships established with University colleges, departments, and other higher education institutions. These include 2+2 efforts with community colleges in Kansas and other states and through consortiums such as the Great Plains Interactive Distance Education Alliance. It is very rewarding to visit with distance students who have the same pride about K-State that is so easily found in Manhattan.

# table of contents

3

1

Division Statistics  
Your College at a Glance

Architecture, Planning & Design

Agriculture

Arts & Sciences

Business Administration

Education

Engineering

Human Ecology

Technology & Aviation

Veterinary Medicine

22

20

24

Faculty and Conference Resources

Recognition and Honors

Scholarships and Division Listing

# DCE Student Profile

Academic Year 2007-2008

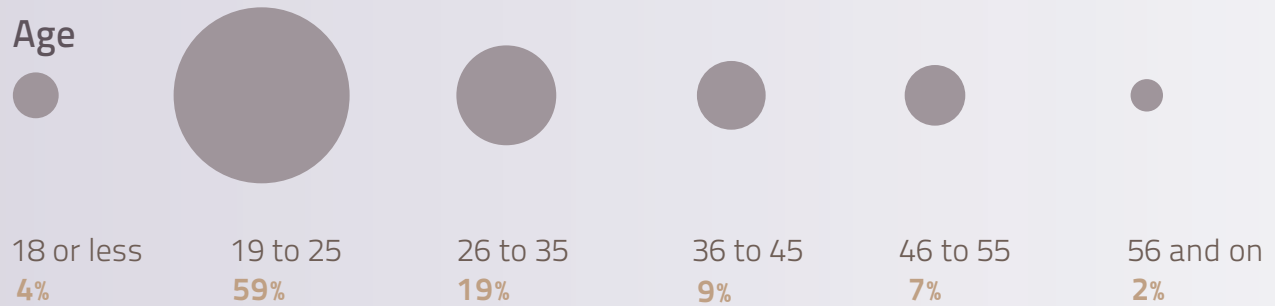
## Gender

Female	57%
Male	43%

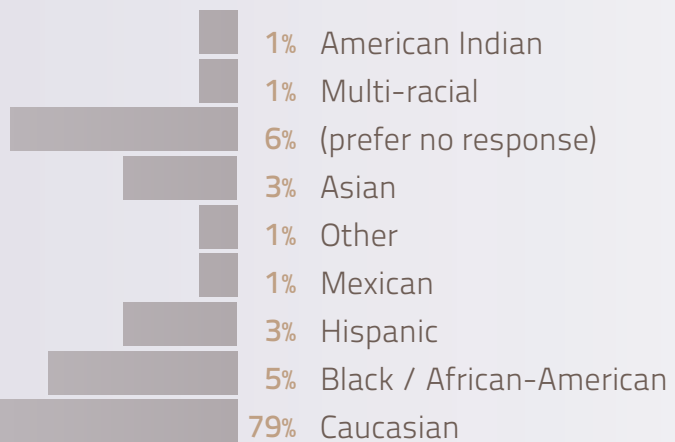
## Location

Kansas	81%
United States	18%
International	1%

## Age



## Ethnicity

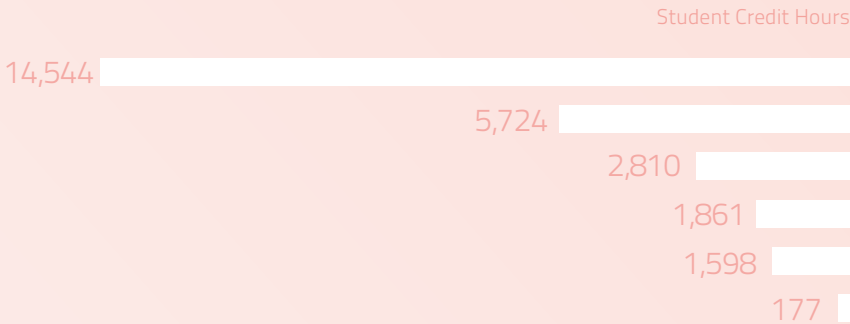


# Division Statistics

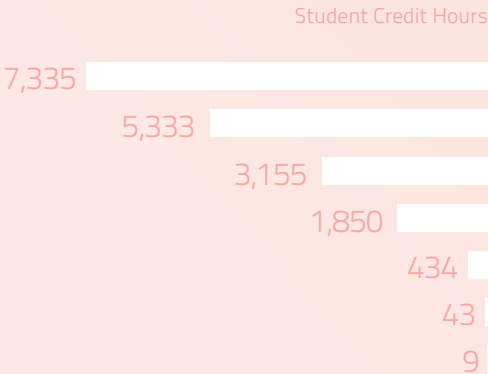
Academic Year 2007-2008

## Student Credit Hours

Undergraduate	26,768
Graduate	18,159
<hr/>	
	44,927



- Undergraduate
- distance education
- evening college
- intersession
- off-campus
- ufm
- esl



- Graduate
- distance education
- esl
- off-campus
- annual programs
- intersession
- telenet 2
- evening college

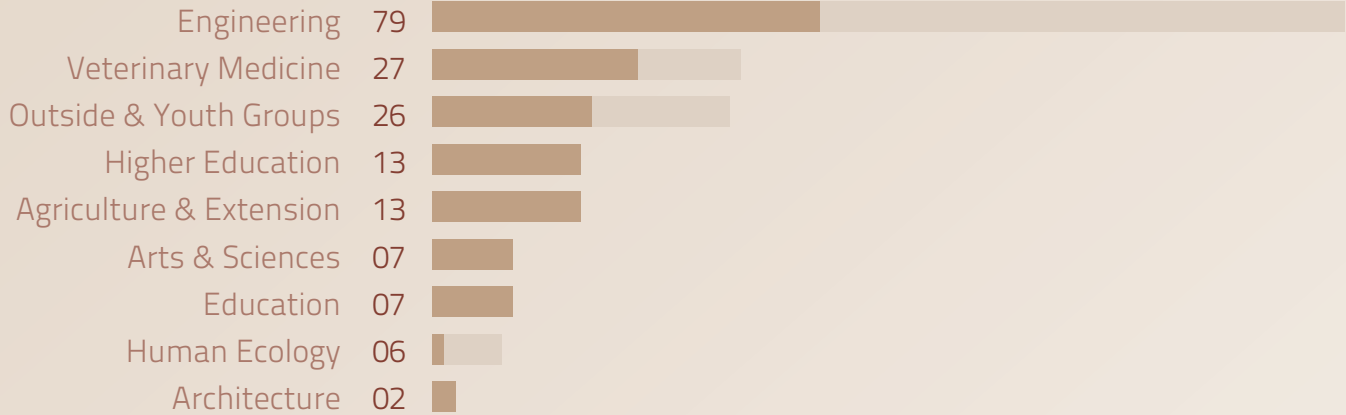
Academic Year 2007-2008

## Total Conferences & Noncredit Programs

Face-to-Face 108

Mediated 72

**180**



## Geographical Range of Conferences & Noncredit Programs



27% State\*



18% Regional



1% Local



20% National



34% International\*\*

\*We had participants from all 50 states in the state conferences

\*\*We had participants in our face-to-face events from Argentina, Australia, Belgium, Belize, Brazil, Canada, China, Ecuador, France, Germany, Hungary, India, Korea, Mexico, Israel, Italy, Japan, New Zealand, Norway, Peru, Philippines, Poland, Portugal, Singapore, South Africa, South Korea, Spain, Sweden, Switzerland, Taiwan, Thailand, Ukraine, UK, and the US in the international conferences



We provide logistical support for students broadening their range of architectural awareness in cities around the country.

Each year the Department of Architecture provides opportunities for their students to visit urban centers so that students are exposed to a broader range of architectural analysis. Students who are in their second year of study travel to Dallas, Texas. Third-year students explore architecture in another U.S. city, which varies from year to year. During FY08, the Division of Continuing Education provided logistical assistance to send 73 students and three faculty members to Dallas, Texas and 74 students and four faculty members to San Francisco, California. The study tours provide the students the opportunity to visit with practicing architects, view a variety of structures noted for their architectural styles, and gain a larger perspective of the needs in urban planning and design.

## College of Architecture, Planning & Design

Academic Year 2007-2008

1,036

student credit hours

741 UG  
295 GR

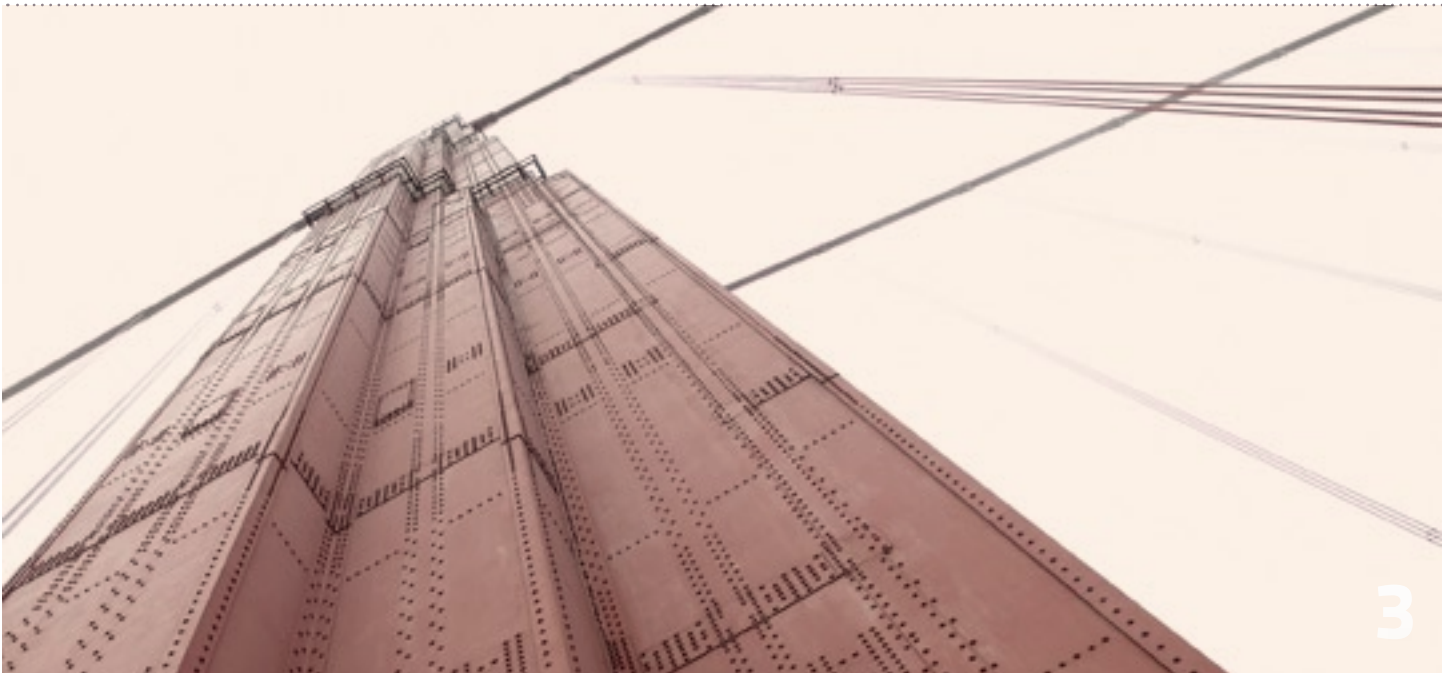
Percent change in SCH over last year

-18.1 UG

147.9 GR

Share of division SCH

2.2%



## Michelle Jones

### K-State Alumna Master's Program in Food Science

**W**ith reports of salmonella and E. coli outbreaks all too prevalent in news headlines these days, concerns about food safety are being pushed to the forefront. Making sure that food is processed safely and handled according to federal regulations is a job that requires a lot of know-how.

According to Michelle Jones, a K-State alumna with an on-campus bachelor's degree and a master's degree through distance education, her alma mater is the place to get that know-how. "When it comes to food science, K-State is ranked one of the highest (institutions). They're on the cutting edge of research in the industry," Jones said.

Jones graduated from K-State's online master's program in food science in August 2007. Originally from Kansas City, Kansas, she attend-

ed K-State as an undergraduate student, earning her bachelor's degree in animal science with the animal product option. Once she graduated and began working in the meat and poultry industry, she realized it might not be such a bad idea to take her education a little further. "I wanted to go back to improve my standing and expertise in the food industry. I was able to gain a lot of food chemistry and composition knowledge during my studies," Jones said.

For Jones, the decision to continue her education at K-State was a no-brainer. Much of the faculty in the food science program knew her from her time as an undergraduate student, and she found that their helpfulness and availability was just as strong as she completed the distance program.

"I've known these professors since 1996. They

"I've known these professors since 1996. They were there when I needed them just as much as they were when I was an undergraduate."

were there when I needed them just as much as they were when I was an undergraduate," Jones said.

Since starting the master's degree,

Jones made a switch to entrepreneur when she began working as an independent food consultant in New York. In her new role, her education in food science is crucial. "Here in New York City, there are a lot of restaurants, and the health department here is famous for shutting them down," Jones laughed.

Restaurants hire Jones to come in and inspect their establishments, and she gives them a full report on issues they need to improve before their next health inspection. All that extra knowledge in food science pays off when she teaches food safety and handling techniques to restaurant personnel.

"I'm also able to do consulting for manufacturers and food importers. And slowly but surely, I'm getting new clients, so this next stage of my career is getting exciting. I'm hoping it will continue to grow," Jones said.



# College of Agriculture

Academic Year 2007-2008

4,492

student credit hours

3,133 UG

1,359 GR

Percent change in SCH over last year

5.7 UG

8.0 GR

Share of division SCH

9.6%



## Quick Facts

- *The Department of Homeland Security (DHS) National Center of Excellence for Food Protection and Defense (NCFPD) recognized K-State's Food Science Program as a National Education Leader.*
- *K-State helped form the Agriculture Interactive Distance Education Alliance (AG-IDEA), a consortium of 23 institutions.*
- *The Food Safety and Defense graduate certificate program was started.*
- *K-State's Master of Agribusiness (MAB) program celebrated its tenth anniversary in 2008.*

## Joel DiGirolamo

K-State Alumnus  
Master's Program in Industrial /  
Organizational Psychology



Joel DiGirolamo has taken a big step. After all, a lot of people dream of one day owning their own business, and not many can drum up the courage to do it. But Kansas State University's distance education program was that little something extra that pushed him into the next phase of his life.

In 2001, DiGirolamo was working for Lexmark International and feeling the strain of the economy. He realized that it might not be such a bad idea to develop some skills outside of those he already possessed to make himself more marketable. With a bachelor's degree in engineering from Purdue University and an MBA from Xavier University, DiGirolamo figured his next step would be to pursue a master's degree in psychology. The only problem was that he didn't know where.

"I asked a friend of mine who is a clinical psychologist what I should go into, and he mentioned industrial and organizational psychology," DiGirolamo said. "So I went out and started looking for programs, and K-State's Master's in Industrial / Organizational Psychology (MIOP) program fit the bill perfectly. It takes management to a whole new level. It goes into the scientific research of the behavior of people in organizations, and I very much liked that because it blended my MBA experience with my engineering background."

While he was working on his master's degree, DiGirolamo remained employed at Lexmark—something that was made possible by the online portion of the program.

"There were times when I'd be in Singapore or China on business trips participating in class discussions. I was able to keep up with my courses even when I was literally on the other side of the planet!" DiGirolamo said. "The residence component provides you

with a sense of community with your fellow students and professors. I met people in the program that I will probably stay in touch with for the rest of my life, and that wouldn't have happened without that on-campus part."

"I was able to keep up with my courses even when I was on the other side of the planet."

The fact that the MIOP program is based on practical rather than theoretical applications comes in handy. By focusing on problem-solving and communication, it gives DiGirolamo the perfect background for his new business, Turbocharged Leadership, a consulting firm based in Lexington, Kentucky.

"I'll mostly be doing workshops, working with teams to improve their processes and communication and understanding of each other, teaching them the value of different viewpoints," DiGirolamo said.

With the increased level of understanding behind the psychological aspects of business and success, DiGirolamo has the tools he needs to step into the unknown with his new consulting business.

"The degree has given me the knowledge and the confidence to use as a springboard to move forward and to go out into business on my own," DiGirolamo said.

# College of Arts & Sciences

Academic Year 2007-2008

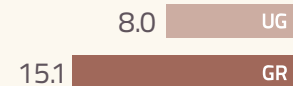
- *The Applied Statistics graduate certificate program was started.*
- *The Public Administration graduate certificate program was started.*
- *K-State concurrent classes were offered for the first time at Riley County High School in Fall 2007.*
- *General Organic Chemistry was offered through distance delivery, and for the first time in K-State history, a Chemistry lab was made available at a distance.*

14,818

student credit hours

12,603 UG  
2,215 GR

Percent change in SCH over last year



Share of division SCH

29.7%



## Quick Facts



## Leigh Garza

K-State Student  
Bachelor's Degree in Business Administration

As a military spouse, Leigh Garza knows the challenges of trying to get an education while facing the continual possibility of having to relocate on a whim. Garza was up for the challenge, but she wanted a guarantee that she could finish the degree program she started even if the army needed to transfer her family to another area.

After moving from Fort Hood, Texas so her husband could be stationed at Fort Riley, Kansas, Garza earned an associate degree in science through Barton Community College courses offered on post, a partnership effort between the community college and K-State. For the spring 2008 semester, she decided to continue her education by earning a bachelor's degree through K-State.

"So many of my hours transferred here, even from my community college," Garza said. "And the process of transferring them was easy."

The K-State distance education program in general business is one of the reasons that Garza, now a senior in accounting, chose to continue her education at K-State while her husband was stationed at Fort Riley.

"I was apprehensive about going back to school at first," Garza said. "I didn't know what the atmosphere was going to be like, but it's been great."

With a full load of classes and a lot of enthusiasm, Garza is taking advantage of the option to

attend on-campus classes as part of her distance degree program in general business. The flexibility of the program gives her a more stable schedule for spending time with her son.

"It's great because it doesn't affect him," Garza said. "I'm still the one picking him up from school every day."

Garza's enthusiasm paid off. She was featured in a student profile in the April 2008 issue of Military Spouse magazine, which highlighted K-State's educational opportunities for today's military

spouses. K-State's distance programs ensure that even if Fort Riley isn't the last stop for Garza and her family, she can take the credits she's already earned with her wherever she goes. K-State's distance education programs and special programs with the military allow Garza and other service members and their families to finish a degree from anywhere in the world.

"I'm just going to go to school full time and get it done," Garza said.

With great determination, Garza is still on track to complete her bachelor's degree from K-State, no matter what challenges of military life may come her way. Thanks to K-State's distance programs, degree completion in the midst of relocation really can be a guarantee.

"I didn't know what the atmosphere would be like, but it's been great."



# College of Business Administration

Academic Year 2007-2008

3,454

student credit hours

3,136 UG  
318 GR

- The bachelor's degree in general business received the largest number of applications to date.
- Several 2+2 agreements for the General Business major were developed and implemented with community colleges in Kansas and other states.

Percent change in SCH over last year



Share of division SCH



## Quick Facts



## Patty Pedersen

K-State Alumna  
Master's Program in Academic Advising



**P**atty Pedersen knows all about putting school on the back burner when life gets in the way. After leaving college as a junior to raise her family, she came back 20 years later to raise her family, she came back 20 years later to complete her bachelor's degree and then completed a certificate program and a master's degree program in Academic Advising at K-State.

Now that she serves as the student services coordinator for the Carbon County Higher Education Center in Rawlins, Wyoming, Pedersen helps her advisees return to school, and she knows just what to say to them when they have to postpone their education.

"I tell them, 'I know you'll be back,' because they will," Pedersen said. "I've been in their shoes, and I know how hard it is to work and have a family. I really understand my students." Pedersen supports students through their academic career from admissions to graduation and finds assisting her fellow non-traditional students very fulfilling.

"Every year, graduation is exciting. It means so much to those students, because it takes them a while. To see a student through graduation is very gratifying," Pedersen said.

Pedersen began working as a student services coordinator in 2001. She joined the National Academic Advising Association (NACADA) in 2003 and attended a professional development conference, where she first learned of the gradu-

ate certificate in academic advising available via an online program at K-State.

"I took to that idea like a duck to water. I said to myself, 'That degree is what I need to be a better advisor for my students.' And that is some of the best information I've ever learned in my life," Pedersen said.

The certificate program consists of 15 credit hours and was a perfect way for Pedersen to solidify her skills in academic advising. She completed the program in 2005 and then enrolled in the online master's degree program in academic advising as soon as possible. All 15 of the graduate certificate credit hours could be applied toward her master's degree.

"I looked into it and decided to start preparing myself," Pedersen said. "The experience has been stellar. The instructors are very good about being available and my advisor has been so helpful. Every class is so different and so full of information. It's never boring!"

Pedersen completed her master's program in Summer 2008 and couldn't be happier to aid her students in planning and executing their own educational choices.

"I would never get my master's if it weren't available online," Pedersen said. "It's given me more confidence in what I'm doing, and I can pass that confidence on to my students in their academic career."

"The experience has been stellar. The instructors are very good and my advisor has been so helpful."





# College of Education

Academic Year 2007-2008

11,339

student credit hours

1,023 UG  
10,316 GR

Percent change in SCH over last year

5.6 UG  
14.4 GR

Share of division SCH

30.3%



## Quick Facts

- *The Academic Advising master's degree program started.*
- *More information requests were completed for the Academic Advising program than any other program offered through distance education.*
- *The English as a Second Language program offered in Southwest Kansas locations reached its maximum number of students.*
- *Courses for Educators brochures with classes specifically for teachers were distributed electronically for the first time to many Kansas City school districts.*

## Chris DeWaal

K-State Alumnus  
Master's Program in Engineering Management  
and Electrical Engineering

People like to say that the only constant is change. It's true in life, and it's definitely true in the field of technology. Chris DeWaal can vouch for that. As a consultant for Raasch Associates, a small engineering firm in Green Bay, Wisconsin, every day—which is part of the reason why he chose to earn a master's degree via online education.

To keep up with the renewal of the 19 professional licenses he holds, which requires up-to-date training, DeWaal enrolled in the online master's program in electrical engineering at Kansas State University.

"Kansas State just seemed to have the most organized program," DeWaal said. "Some of the other institutions I looked at weren't so certain about when they would be offering courses or what the requirements were."

DeWaal began taking courses through distance education in 2002. He was impressed with the program faculty. A little research into their work had shown he was learning from world-class engineers, and their availability and willingness to explain complex ideas were a welcome surprise.

"They went way above and beyond what I expected as far as making themselves available," DeWaal said. "Things have changed since I was an undergraduate. The Internet and e-mail make it possible to receive all kinds of help with questions or concerns."

As he neared completion of his master's degree in 2005, DeWaal began to contemplate his future at his consulting firm. It wasn't long before he realized he'd need a solid background in business to move up when senior management retired and moved out. So he signed up for his second

online master's degree program in engineering management.

"The experience with the master's in electrical engineering was outstanding," De-

Waal said. "The staff was great, the classes were immediately applicable, and I knew the management experience would be similar."

Interaction with his fellow students in the program was an unanticipated benefit for DeWaal as he learned to manage employees of differing age groups.

"Going into management, the people that I will be managing will often be of an age where they'll just be getting out of school," DeWaal said. "That interaction gives me an idea of how people in that age group think and how they approach problems."

So after two distance degrees in engineering from K-State, will DeWaal turn to the same place if he decides to go after a Ph.D. in an engineering field?

"I'm not going to say never," DeWaal said. "I would definitely pursue it if K-State made a program like that available online."

"They went way above and beyond what I was expecting as far as making themselves available."



## College of Engineering

Academic Year 2007-2008

2,101

student credit hours

810 UG

1,291 GR

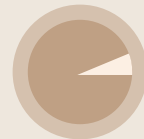
Percent change in SCH over last year

-9.2 UG

11.9 GR

Share of division SCH

5.1%

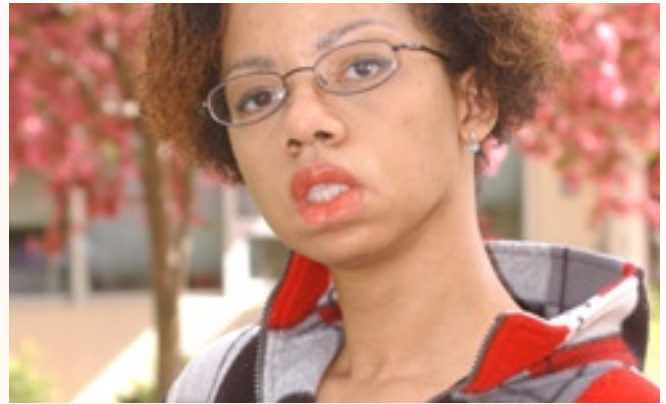


## Quick Facts

- Starting in 2008, the College of Engineering distance programs went fully online, making it possible for students to view course lectures within minutes of the conclusion of the on-campus class.
- Enrollment in online engineering programs increased 28% between 2007 and 2008.
- A new "Communications and Networking" focus for the online electrical engineering master's program was launched in 2008, offered in addition to the electric power systems focus.
- The University Continuing Education Association's Marketing and Publication Awards recognized the online engineering programs' redesigned promotional brochure set as Most Improved in 2008.
- K-State took part in the Big 12 Nuclear Engineering Consortium, formed in 2008.

## Lanita McGee

K-State Distance Student  
Bachelor's Program in Dietetics



Sometimes when a student visits the K-State campus, it's more than just a trip to the university. Lanita McGee's visit represented a major milestone.

McGee, a senior in education dietetics, traveled to Manhattan from her hometown of Cincinnati, Ohio to accept one of K-State's Extraordinary Student Awards in 2008.

The awards are given to up to six students of junior or senior standing each year who have overcome significant obstacles to achieve educational success. McGee is the first distance student to receive the award since its inception in 2006.

"After obtaining my first degree in Management of Information Systems, I worked in Information Technology as an analyst and consultant for over ten years," McGee said.

But the demands of her job became difficult to handle when she was diagnosed with Neurofibromatosis Type 2, an inherited condition that impairs the transmission of auditory signals and requires many treatments and examinations. It was time for her to re-evaluate her career.

"I needed to find something I was passionate about," McGee said. "Food and nutrition have always been an interest. There was a personal battle with nutrition going on because I could not maintain adequate weight during surgeries, radiation, or complications from my disease. To stay out of doctor offices, learning about nutrition was

K-State's distance program, traveling

"Distance education was the only way I could realize my new goal."

vital."

She visited the American Dietetics Association website, where she found information about how to become a registered dietitian—and K-State's distance education program in dietetics.

"Leaving my town was not plausible because I needed quick access to my doctors," McGee said. "Distance education was the only way I could realize my new goal. There are only a

few approved distance programs for dietetics, and K-State has one of the best in the United States so it was not a difficult decision to apply here."

McGee said the convenience and flexibility of the program continue to meet her needs. She got the chance to express her enthusiasm for K-State by visiting campus to receive her award and meet her instructors.

"Visiting K-State was a little overwhelming," she said. "Meeting the faculty was the best part of the trip. I was able to finally meet with my mentor, Sharon Marcos, and my advisor, Karla Girard. Both have been instrumental in my progress through the dietetics program."

McGee's visit sparked an even greater passion for dietetics, and her career aspirations are growing each day. "I would love to get into gerontology, medical nutrition therapy, or weight management for hearing impaired patients," McGee said. "I may get into telehealth, healthcare advice over the Internet. The possibilities are only limited by my mind."



# College of Human Ecology

Academic Year 2007-2008

7,666

student credit hours

5,322 UG

2,344 GR

Percent change in SCH over last year

-31.8 UG

22.2 GR

Share of division SCH

16.4%



## Quick Facts

- *Virginia Moxley, Professor and Dean of the College of Human Ecology, received the 2008 Faculty Service Award from the University Continuing Education Association.*
- *Ann Murray, associate professor of family studies and human services, received the 2008 Excellence in Teaching Award from the University Continuing Education Association.*
- *In Fall 2008, the dietetics master's degree program was started as a part of the Great Plains Interactive Distance Education Alliance.*
- *Along with K-State's Extraordinary Student Award, Lanita McGee also won the 2008 University Continuing Education Association Outstanding Student Award for the Great Plains Region.*
- *A set of advertisements for the Early Childhood Education bachelor's program won the bronze award in the print ad category for the University Continuing Education Association's Marketing and Publication Awards.*

## K-State at Salina

---

It's no surprise that K-State at Salina's aviation programs are helping college students rise to new heights, but these days, the soaring seems to be starting with students who are a little younger.

In August 2007, K-State at Salina's Continuing Education Department teamed up with the Aviation Department to host more than forty students from inner-city neighborhoods of Washington, D.C. who attended an Aerospace Flight Academy Camp on the K-State at Salina campus.

The camp enabled minority students who are interested in aviation to spend ten days on the K-State at Salina campus and provided them with the opportunity to fly in a single-engine aircraft. Each student received at least four hours of flying time, including two hours riding alongside a flight instructor in the co-pilot's seat. Students also had the chance to take supervised control of the plane. Aside from learning to fly a few of the 50 learning aircraft in K-State at Salina's fleet, the students attend ground school and learned about what it takes to maintain a modern fleet of aircraft.

The development of the camp began when an Organization of Black American Pilots member named Robert Newkirk approached the Washington, D.C. city council in early 2007. Discussions began about the city possibly helping to financially subsidize the camp, and the city committed to the idea.

August of 2008 marked the second year the camp was offered to the inner-city students, and there have already been returning participants the second year. There are even students who are interested in pursuing their future college education as a K-State Wildcat after attending the camp in Salina.

"...a great opportunity for students to learn about aviation and experience a college environment."

"This program offers a great opportunity for students to learn about aviation and experience a college environment," said

Heather Wagoner, event and marketing coordinator for K-State at Salina's Continuing Education Department.

K-State at Salina has developed many opportunities for students to pursue a career in the aviation field, offering training in piloting, air traffic control, aircraft mechanics, manufacturing, and airport operations. As a result of the camp experience and K-State at Salina's aviation offerings, two students who attended the Aerospace Flight Camp have already requested admission to Kansas State University.

Students at the camp also visited the Cessna Corporation in Wichita, the Kansas Cosmosphere and Space Center in Hutchinson, and the Smoky Hill Bison Ranch near Lindsborg, Kansas.

"We've had great experiences with the D.C. Academy thus far, and we look forward to continuing to work with these students in the future," Wagoner said.



# Technology & Aviation

Academic Year 2007-2008



## Quick Facts

- *K-State at Salina's efforts in its Department of Continuing Education resulted in a strong increase in attendance at noncredit programs.*
- *The Media Services extension of K-State at Salina's Continuing Education Department increased the number of mediated classrooms to 94%.*
- *K-State at Salina and North Central Technical College provided training in construction and initiated a portable Certified Driver's License classroom for use across Kansas.*
- *K-State at Salina offered concurrent credit programs in the five Saline County high schools so students could receive K-State credit within their high school curriculum.*

## VetBytes

---

Many professionals in the field of veterinary medicine will tell you there's one kind of bite they actually look forward to getting. The K-State College of Veterinary Medicine's noncredit online program, VetBytes, offers online modules with information and training to earn continuing education contact hours and certificates of completion suitable for licensure.

VetBytes began in 2004 and now offers asynchronous seminars covering many areas of veterinary medicine and training. Currently, there are 16 food animal topics, two inclusive topics, and 12 small animal topics offered.

The overall goal of the program is to offer a continuing education program without the time or travel expenditures for presenters and audiences, and to provide quality delivery of veterinary medical instructional materials. In addition to private practitioners, veterinarians working in industry, feedlots, research, the military, zoos, professional organizations, security, and education also subscribe to VetBytes.

The program was developed not only in response to veterinary medicine professionals needing a source of continuing education in their field, but also for faculty in the K-State College of Veterinary Medicine who requested more options to reach veterinary professionals.

"VetBytes has given us access to an audience that would otherwise be unavailable for teaching and information exchange," said David E. Ander-

son, DVM, MS, DACVS. "This is an incredible resource for K-State, and I have been extremely happy with the product."

The VetBytes staff currently includes Marci Ritter, Kent Nelson, and recently retired Linda Johnson of the K-State College of Veterinary Medicine. Under their leadership, 21 new VetBytes modules were created in 2008, bringing the

total number of modules currently offered to 31.

"VetBytes has filled a niche for veterinarians, breeders, researchers, and industry personnel who need to stay

current and accredited," said Marci Ritter, Program Coordinator in the College of Veterinary Medicine. "Individuals from 26 states are learning online through VetBytes."

Once a veterinary medical professional has used VetBytes, there is a 50 percent return rate. Since some of the instructional materials can change rapidly, the modules are updated often to assure that the most accurate information is offered, so professionals in the field can keep coming back to VetBytes to stay ahead.

The program's originality and success has earned it recognition as the 2008 Outstanding Non-Credit Program by the University Continuing Education Association for the Great Plains Region. More VetBytes modules are currently in development.

"VetBytes has filled a niche for veterinarians, breeders, researchers, and industry personnel..."



# Veterinary Medicine

Academic Year 2007-2008

- *The Camelid Distance Education Program, supported by the Mid-America Alpaca Foundation, was launched in Spring 2008.*
- *The K-State College of Veterinary Medicine offered 18 face-to-face conferences, accommodating 2,030 participants from 31 states and 14 countries.*
- *Three online courses were developed in 2008: Rumen Microbiology; Topics in Pathobiology: Food Safety Risk Analysis; and Trade and Agricultural Health.*



## Quick Facts

## Faculty Services

**T**hrough services offered by the Division of Continuing Education, K-State faculty can offer distance education courses and degree programs, provide training to businesses and industries through noncredit learning opportunities, and participate in professional conferences hosted at K-State or throughout the world. K-State faculty have the Division's resources available to help review and assimilate information about a project and have access to technical competencies and capabilities to tailor just the right solution for the project.

Faculty teaching courses through the Division of Continuing Education are responsible for the development, instruction, and evaluation of their courses. To assist with this, the Division of Continuing Education has created a "Faculty Guidelines Document" that is available on the Division website. The Faculty Guidelines Document is a reference that provides an overview of faculty roles and responsibilities, course administration, course development procedures and guidelines, K-State's mediated learning delivery methods, university policies, and more.

[www.dce.k-state.edu/faculty/guidelines.shtml](http://www.dce.k-state.edu/faculty/guidelines.shtml)

In connection with the guidelines document, additional information is available for faculty in a publication titled "Strategies for Building a Successful Course." This is a guideline for faculty members and administrators to use when designing and developing an e-learning course. There is not an exact formula for creating this type of course, but following these guidelines closely will ensure a quality product. Faculty can also download a short checklist designed as a companion to this document. The checklist can be used while planning a course.

*These documents, along with additional information, can be found at: [www.dce.k-state.edu/faculty/guidelines.shtml](http://www.dce.k-state.edu/faculty/guidelines.shtml)*

## Our Services For Conferences

**K**ansas State's National Institute of Land Management and Training (NILMT) and the Division of Continuing Education (DCE) began supporting the the Department of the Army in 2002 to coordinate the Integrated Training Area Management (ITAM) program. DCE negotiates the contracts associated with the event, provides registration services, develops publications, coordinates all food and beverage functions, and assists with on-site management. NILMT provides presentation and AV support for the concurrent and general sessions.

The K-State team traveled to Savannah, Georgia, El Paso, Texas, San Francisco, California, and Indianapolis, Indiana to coordinate this military program for over 650 registrants. The program is held in a convention center and consists of concurrent sessions, poster presentations, and exhibitors. Kansas State University and Fort Riley hosted the final ITAM program in Manhattan, Kansas the summer of 2006.

In 2007, the ITAM program consolidated with the Range and Training Land Program (RTLTP) and became the Sustainable Range Program (SRP). The new combined format provides an integrated environment for the scientific exchange of technologies, ideas, experiences, and lessons learned that relate to the sustainable management of military training and testing land. The first SRP workshop was held in Hampton, Virginia the summer of 2007. The integrated program increased attendance to over 1,100 attendees and increased the number of breakout sessions and exhibits significantly.

In the summer of 2008, the Army decided to coordinate the workshop without the assistance of the K-State professional team. In early fall of 2008, K-State was approached by the Department of the Army asking again for their coordination services. K-State submitted a proposal that was reviewed and approved by the Army within 48 hours. K-State is currently coordinating the 2009 SRP workshop, scheduled for July 2009 at the Indiana Convention Center in Indianapolis.

## Pinnacle Honors

**P**innacle Honor Society is a national honor society recognizing qualifying non-traditional students for their achievements. The K-State Division of Continuing Education began offering distance students the chance to be inducted into Pinnacle in 2003. Inductees participate through an **online induction** or can come to K-State to attend the reception. In Spring of 2008, the Division helped 29 students celebrate their induction.



### *The 2008 Pinnacle Honor Society inductees include:*

*Sani Abubakar  
Caroline Addair  
Lindsey Ahalt  
Antonio Asebedo  
Kaycie Baxley  
Kyle Casey  
Shannon Clauss  
Traci Davies  
Audra Doak  
Robin Edmunds*

*Janet Guvele  
Thanh Hampton  
Magan Harrell  
Cheri Lee  
Yuan-Chao Lee  
Morgan Lillich  
Jamie Macke  
Kevin Makin  
Nicole Meinhardt*

*Megan Morgan  
Skilar Nonamaker  
Sarah Plevinski  
Tara Reinhardt  
Hillary Rombeck  
Karalee Ruark  
Kelsey Thomas  
Candy Tryggestad  
Tracey Welsh  
McKenzie Woods*

---

### Awards Reception

The Division of Continuing Education honored distance faculty at the first annual Distance Faculty Award Reception in May 2008. Several national awards were recognized as well as the first DCE Outstanding Advisor Award.

*Cheryl Polson*

*DCE Outstanding Advisor Award*

*Virginia Moxley*

*UCEA Faculty Service Award*

*Allen Featherstone*

*ACHE Distinguished Program Award (AGEC 710)*

*Ann Murray*

*UCEA Teaching Award*

*Betty Stevens*

*UCEA John L. Christopher Leadership Award*

*Aaron Stroot*

*UCEA Support Specialist Award*

*Ruth Williams*

*GP-IDEA Award*

*Loren Wilson and Deb Wood*

*ExpansIS Award*

## Scholarships

### *Maurine Allison O'Bannon Scholarship*

*Spring 2008  
Fall 2007*

*Eight students received O'Bannon scholarships for the semester.  
Seven students received O'Bannon scholarships for the semester.*

## Virtual Commencement

**K**ansas State University's Division of Continuing Education offers a Virtual Commencement in the Spring and Fall semesters to honor K-State distance education graduates.

The Virtual Commencement website includes a ceremony with congratulatory remarks by K-State staff as well as a virtual reception area where messages can be posted to the distance graduates.

[www.dce.k-state.edu/students/commencement](http://www.dce.k-state.edu/students/commencement)

### Division Listing

K-State's Division of Continuing Education is located at 1615 Anderson Avenue in Manhattan, Kansas.

#### Credit Programs

*Distance Education, Evening College, Intersession, credit courses, distance degree programs, courses for teachers, 2+2 programs with community colleges*

785-532-5575 or 1-800-622-2KSU (2578)  
informationdce@k-state.edu  
Fax: 785-532-3779

#### Fort Riley

*K-State at Fort Riley office on post*  
785-532-5575 (general questions) or 785-784-5930

#### TELENET 2

*Statewide videoconference delivery system*  
785-532-5995

#### UFM

*Community Learning Center*  
785-539-8763

#### Facilitation Center

*Course materials and testing*  
1-877-528-6105 or 785-532-5686

#### Conferences and Non-credit Programs

785-532-5569 or 1-800-432-8222  
informationdce@k-state.edu  
Fax: 785-532-3779

#### Mailing Address

Division of Continuing Education  
Kansas State University  
13 College Court Building  
Manhattan, KS 66506

